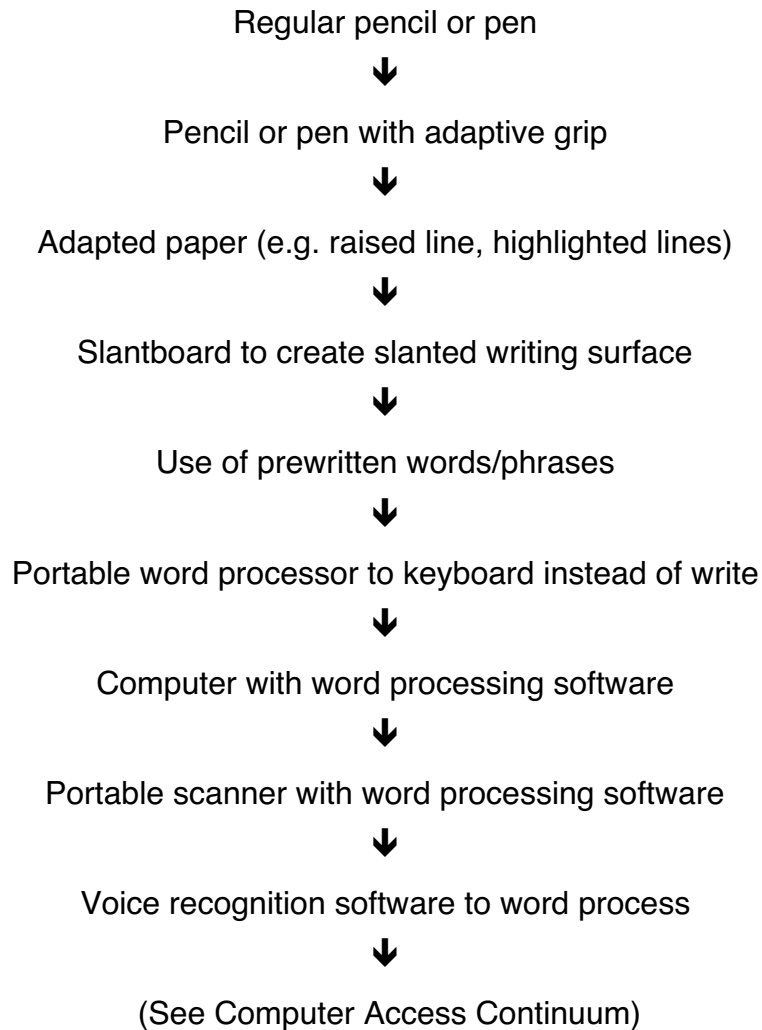


**A CONTINUUM OF CONSIDERATIONS
FOR ASSISTIVE TECHNOLOGY
For the Mechanics of Writing**



Reprinted with permission of Penny Reed (editor), Wisconsin Assistive Technology Initiative (WATI); Assessing Student's Needs for Assistive Technology ©2000.

**A CONTINUUM OF CONSIDERATIONS
FOR ASSISTIVE TECHNOLOGY****For Computer Access**

Keyboard using accessibility options



Word prediction, abbreviation/expansion to reduce keystrokes



Keyguard



Arm support (e.g. Ergo Rest)



Track ball/track pad/joystick with on-screen keyboard



Alternate keyboard (e.g. IntelliKeys, Discover Board, TASH)



Mouth stick/Head Master/Tracker with on-screen keyboard



Switch with Morse code



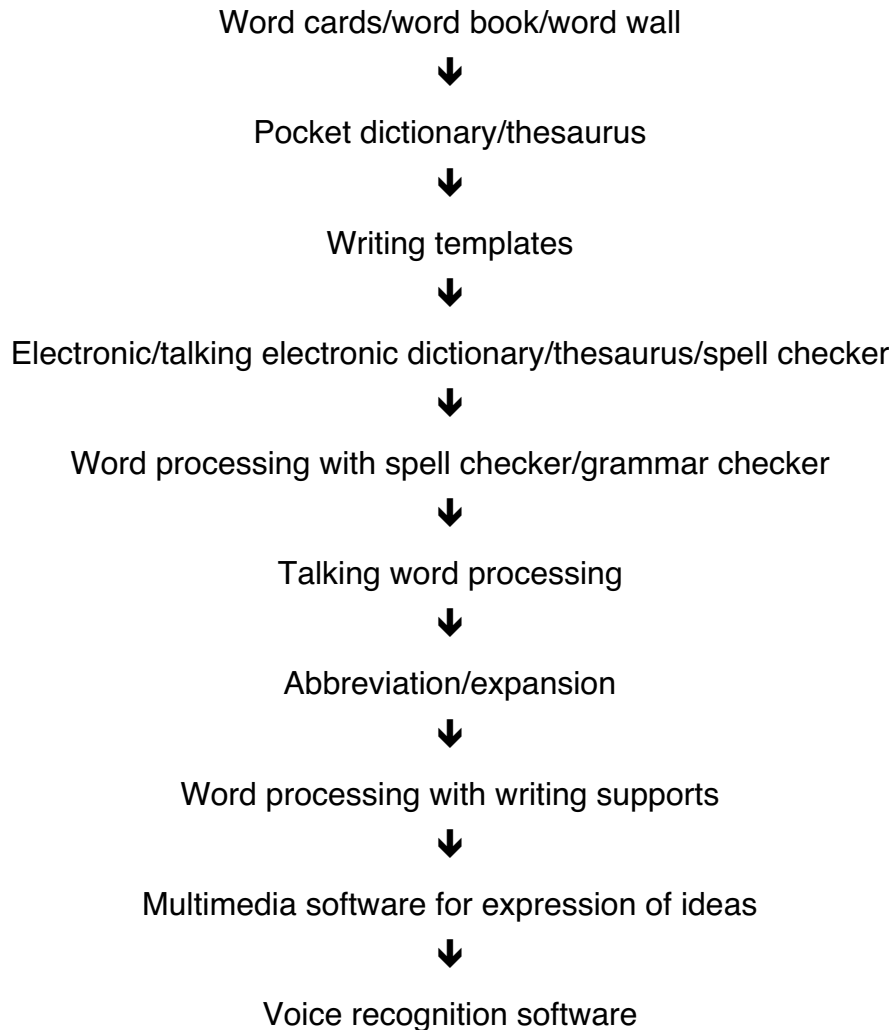
Switch with scanning



Voice recognition software

Reprinted with permission of Penny Reed (editor), Wisconsin Assistive Technology Initiative (WATI); Assessing Student's Needs for Assistive Technology ©2000.

**A CONTINUUM OF CONSIDERATIONS
FOR ASSISTIVE TECHNOLOGY
For Composing Written Material**



Reprinted with permission of Penny Reed (editor), Wisconsin Assistive Technology Initiative (WATI); Assessing Student's Needs for Assistive Technology ©2000.

**A CONTINUUM OF CONSIDERATIONS
FOR ASSISTIVE TECHNOLOGY
For Communication**

Communication board/book
with pictures/objects/letters/words



Eye gaze board/frame



Simple voice output device



Voice output device with levels



Voice output device with icon sequencing



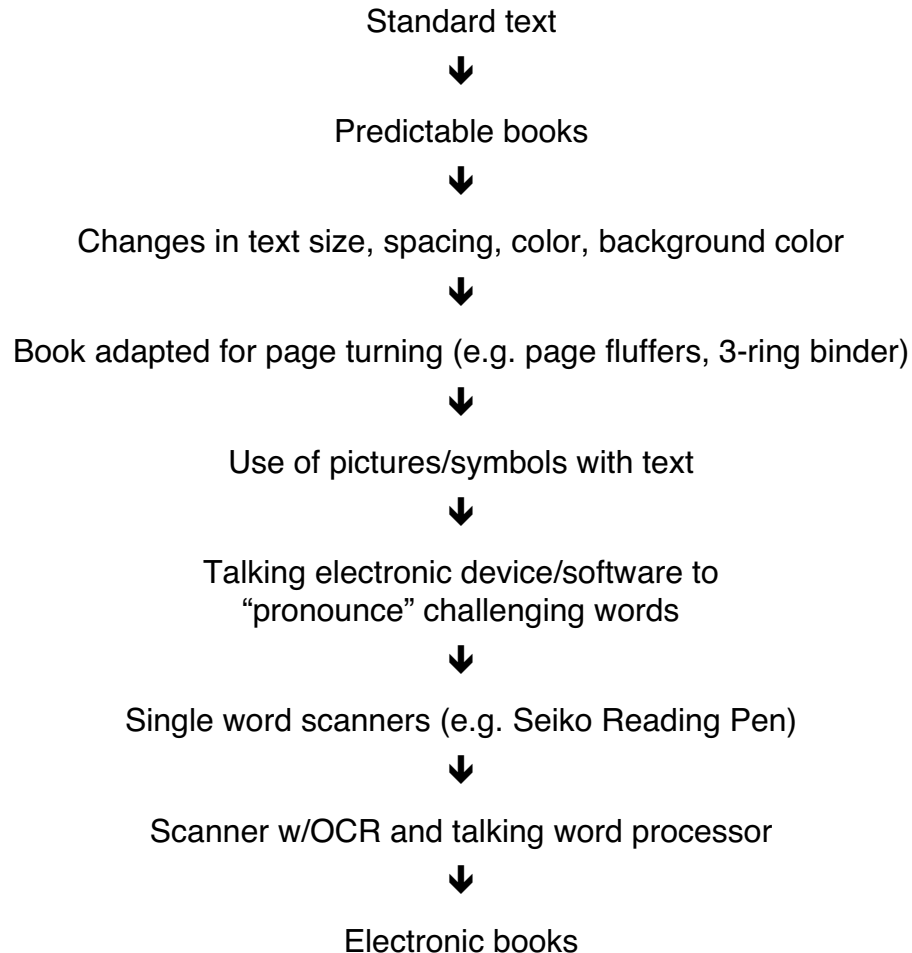
Voice output device with dynamic display



Device with speech synthesis for typing

Reprinted with permission of Penny Reed (editor), Wisconsin Assistive Technology Initiative (WATI); Assessing Student's Needs for Assistive Technology ©2000.

**A CONTINUUM OF CONSIDERATIONS
FOR ASSISTIVE TECHNOLOGY
For Reading**



Reprinted with permission of Penny Reed (editor), Wisconsin Assistive Technology Initiative (WATI); Assessing Student's Needs for Assistive Technology ©2000.

**A CONTINUUM OF CONSIDERATIONS
FOR ASSISTIVE TECHNOLOGY
For Learning/Studying**

Print or picture schedule



Low tech aids to find materials (e.g. index tabs, color coded folders)



Highlight text (e.g. markers, highlight tape, ruler)



Recorded material
(e.g. books on tape, taped lectures with number coded index, etc.)



Voice output reminders for assignments, steps of task, etc.



Electronic organizers



Pagers/electronic reminders



Single word scanners



Hand-held scanners



Software for concept development/manipulation of objects
- may use alternate input device, e.g. switch, touch window

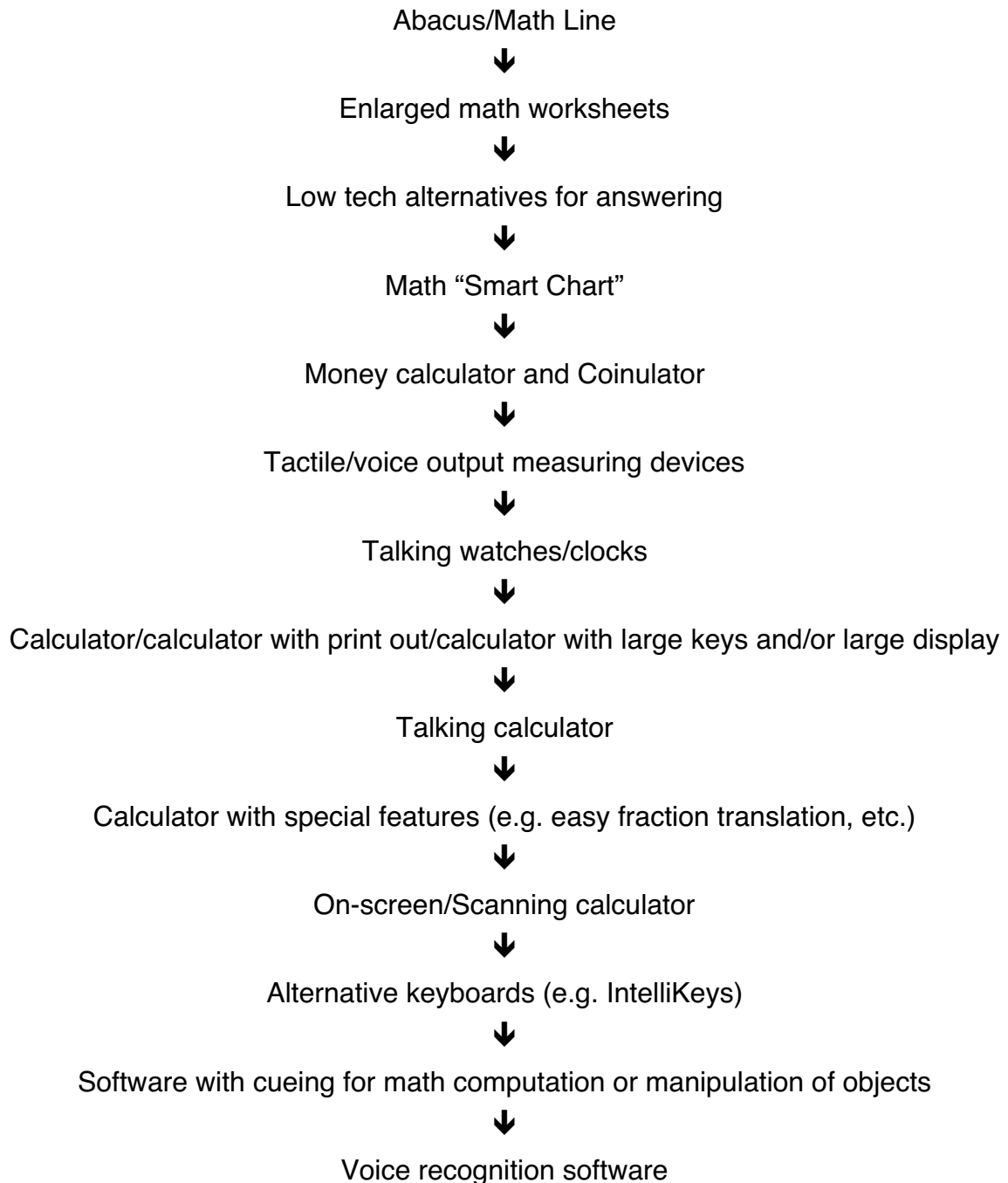


Software for organization of ideas and studying
(e.g. Inspiration, Claris Works Outline, PowerPoint, etc.)



Palm computers

Reprinted with permission of Penny Reed (editor), Wisconsin Assistive Technology Initiative (WATI); Assessing Student's Needs for Assistive Technology ©2000.

**A CONTINUUM OF CONSIDERATIONS
FOR ASSISTIVE TECHNOLOGY
For Math**

Reprinted with permission of Penny Reed (editor), Wisconsin Assistive Technology Initiative (WATI); Assessing Student's Needs for Assistive Technology ©2000.

**A CONTINUUM OF CONSIDERATIONS
FOR ASSISTIVE TECHNOLOGY
For Recreation and Leisure**

Toys adapted with Velcro™, magnets, handles, etc.



Toys adapted for single switch operation



Adaptive sporting equipment (e.g. lighted or beeping ball)



Universal cuff or strap to hold crayons, markers, etc.



Modified utensils (e.g. rubber stamps, rollers, brushes)



Ergo Rest or other arm support



Electronic aids to control/operate TV, VCR, CD player, etc.



Software to complete art activities



Games on the computer



Other computer software

Reprinted with permission of Penny Reed (editor), Wisconsin Assistive Technology Initiative (WATI); Assessing Student's Needs for Assistive Technology ©2000.

**A CONTINUUM OF CONSIDERATIONS
FOR ASSISTIVE TECHNOLOGY
For Activities of Daily Living (ADLs)**

Nonslip materials to hold things in place



Universal cuff/strap to hold items in hand



Color coded items for easier locating and identifying



Adaptive eating devices (e.g. foam handles, deep sides)



Adaptive drinking devices (e.g. cup with cut out rim)



Adaptive dressing equipment (e.g. button hook,
elastic shoe laces, Velcro™ instead of buttons)



Adaptive devices for hygiene
(e.g. adapted toothbrush, raised toilet seat, etc.)



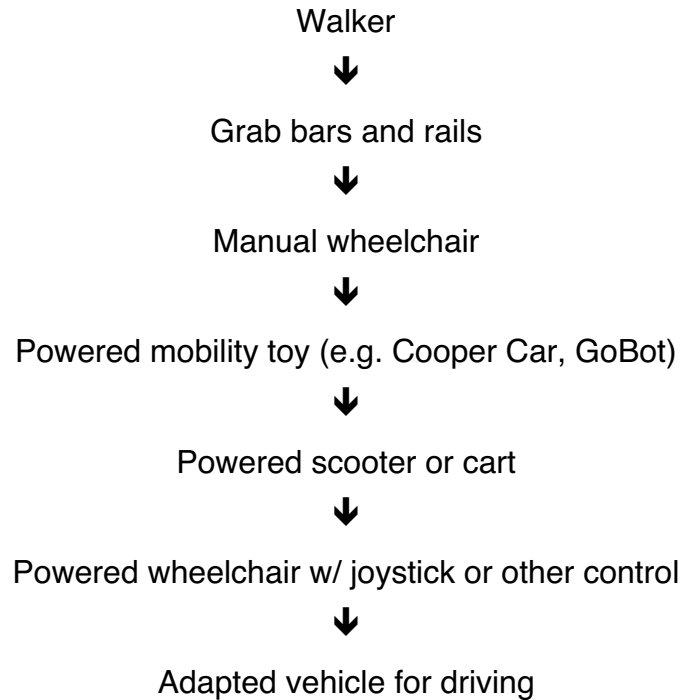
Adaptive bathing devices



Adaptive equipment for cooking

Reprinted with permission of Penny Reed (editor), Wisconsin Assistive Technology Initiative (WATI); Assessing Student's Needs for Assistive Technology ©2000.

**A CONTINUUM OF CONSIDERATIONS
FOR ASSISTIVE TECHNOLOGY
For Mobility**



Reprinted with permission of Penny Reed (editor), Wisconsin Assistive Technology Initiative (WATI); Assessing Student's Needs for Assistive Technology ©2000.

**A CONTINUUM OF CONSIDERATIONS
FOR ASSISTIVE TECHNOLOGY
For Control of the Environment**

Light switch extension



Use of interface and switch to activate battery operated devices



Use of interface and switch to turn on electrical appliances
(e.g. radio, fan, blender, etc.)



Radio/ultra sound to remotely control appliances



Use of electronic aid to daily living to control environment in
connection with an augmentative communication device

Reprinted with permission of Penny Reed (editor), Wisconsin Assistive Technology Initiative (WATI); Assessing Student's Needs for Assistive Technology ©2000.

**A CONTINUUM OF CONSIDERATIONS
FOR ASSISTIVE TECHNOLOGY
For Seating and Positioning**

Standard seat at correct height and depth



Non-slip surface on standard seat to prevent slipping (e.g. Dycem)



Bolster, rolled towel, blocks to assist in positioning



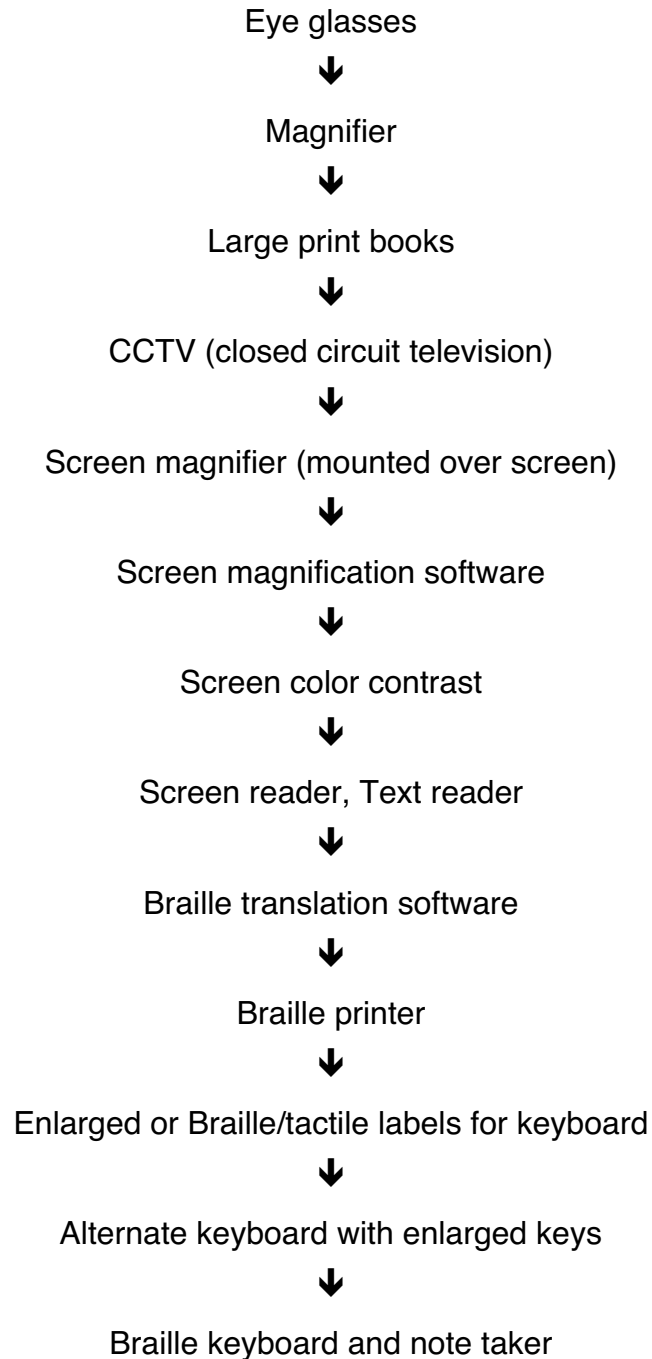
Adapted/alternate chair, sidelyer, stander



Custom fitted wheelchair or insert

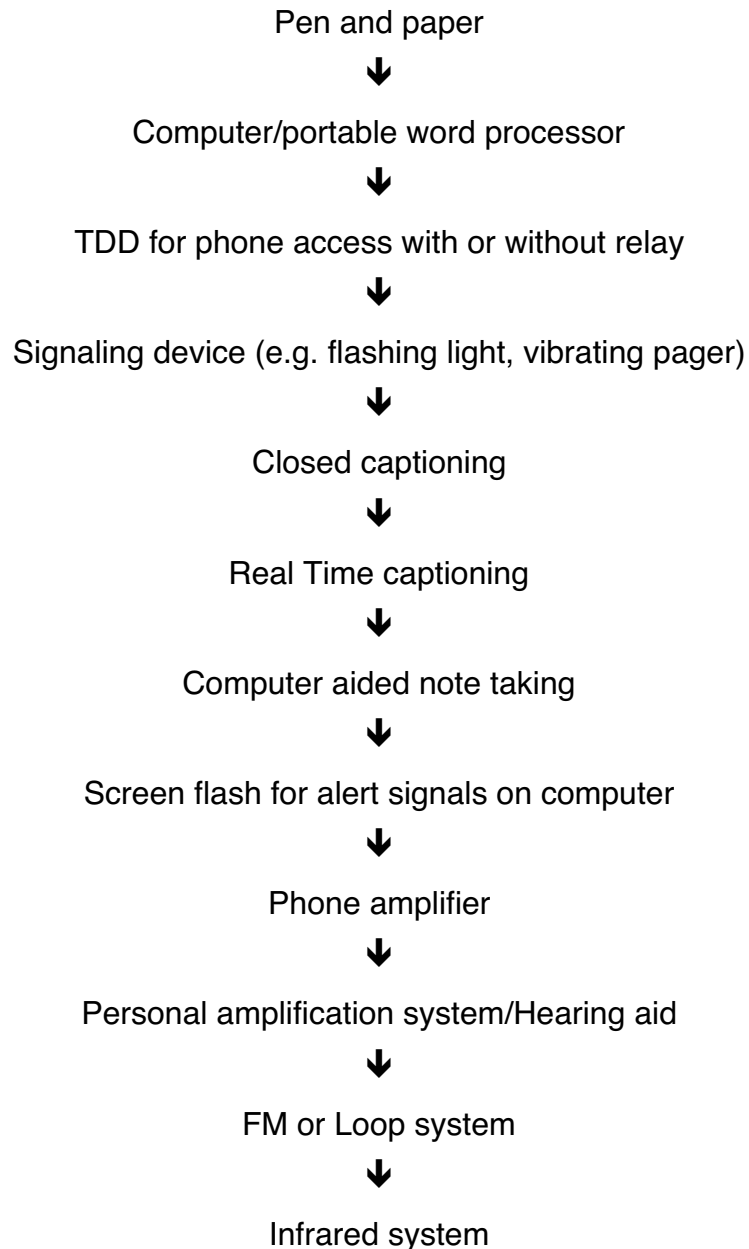
Reprinted with permission of Penny Reed (editor), Wisconsin Assistive Technology Initiative (WATI); Assessing Student's Needs for Assistive Technology ©2000.

**A CONTINUUM OF CONSIDERATIONS
FOR ASSISTIVE TECHNOLOGY
For Vision**



Reprinted with permission of Penny Reed (editor), Wisconsin Assistive Technology Initiative (WATI); Assessing Student's Needs for Assistive Technology ©2000.

**A CONTINUUM OF CONSIDERATIONS
FOR ASSISTIVE TECHNOLOGY
For Hearing**



Reprinted with permission of Penny Reed (editor), Wisconsin Assistive Technology Initiative (WATI); Assessing Student's Needs for Assistive Technology ©2000.